



**Quick Start Guide and Lamination Instructions  
for  
Cling Film version**

# Quick Start Guide For



This guide covers the following: loading the software; setting up the communications; touch alignment; sensitivity of the touch foil and mouse function.

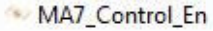
For further details please refer to the full user guide supplied with the ViP Interactive Foil CD.

1. **Please note: The touch screen touch function is disabled on first start up, you must enable (see section 6) only after you have set up the calibration and touch sensitivity.**
2. **You must save the configuration before closing the MA7 after the following setup procedure.**
3. **Ensure you use the right driver number on the CD as stated on the foil's Electronic Control Board (where applicable). If no driver number is stated, use Driver 0.**
4. **Please ensure that you follow the correct instructions at section 3 (Communications) depending on whether your electronic control board has a Serial or USB connector. (For Serial board with Serial-USB Converter please follow Serial Communications)**

## 1. Loading the Touch Driver Software onto PC

1. Switch on projector/LCD and align image with the active area of the touch foil
2. Insert the ViP Interactive Foil driver disc into the PC. Installation will start automatically
3. Follow instructions on the screen
4. During the installation process ensure that you create a new folder (named in accordance with the driver number) and remember the location of this folder
5. Further documentation can be found in the ViP Documentation folder on the ViP Interactive CD (Right-click and Open CD from My Computer)

## 2. Starting the Driver Control Program once installed

1. To start the driver, either tick the "Launch ViP X" box during the installation process or go to the new selected directory and **double click Ma7\_Control\_En.exe** icon.  
    
2. If it is required to start the driver every time Windows is started then a **short cut to Ma7\_Driver.exe (not the program)** is automatically saved in the **Start-Up folder**

When the program is started it displays the following window:



Fig 1

### 3. Configuring the Communications Port

Please ensure that you follow the correct instructions, depending on whether your electronic control board has a Serial or USB connector. (For Serial board with Serial-USB Converter please follow Serial Communications)

#### Serial Communications

When the program has loaded:

Select the **Comms** tab

1. If you are using a Serial to USB convertor with Win 98 or XP, please install the driver software **before** you connect the USB cable. With Windows Vista you connect the cable first to collect the driver from the internet
2. Connect to a free serial port or USB port if you are using a Serial to USB adaptor. Other devices, drivers or programs **must not** address this port.
3. Make sure the driver box called '**Present**' is red and select the appropriate port that the touch foil is connected to. **Do not use the USB port selection**
4. Select 19.200 Baud rate
5. Tick the '**Open**' box in the **Status section**
6. When the driver recognises the touch foil, the **Open**, **Active** and **Valid** boxes will go red
7. The button called **Reset** will reset the touch foil driver when pressed

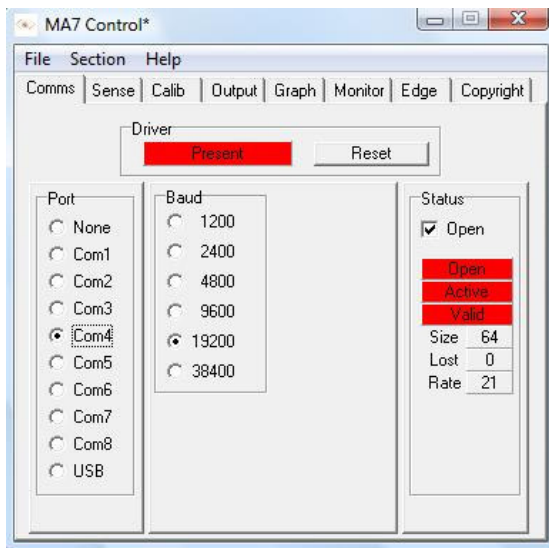


Fig 2

**Reasons why the driver does not see the touch foil on the screen are usually:**

- Touch foil on a different port to the one selected
- The Baud rate is incorrect
- Another device, driver or program is using the port
- Moisture still in the controller after lamination

**Reasons why the mouse pointer is erratic on the screen at this point is usually because:**

- Microsoft windows has incorrectly installed the ViP Interactive Foil as a serial ball mouse\*
- Moisture still in the controller after lamination
- A metallic material is close to where the foil is positioned

\* If MS Windows has installed the ViP Interactive Foil as a serial ball mouse you must go into system/device drivers/mouse drivers and pointers and disable the driver not delete.

## USB Communications

When the program has loaded: Select the **Comms** tab

- 1 Connect to a free USB port.
2. Select **USB** option in the **PORT** section.
3. Make sure the driver box called '**Present**' is red indicating that the driver has loaded.
4. Tick the '**Open**' box in the **Status section**
5. When the driver recognises the touch foil, the **Open**, **Active** and **Valid** boxes will go red
6. The button called **Reset** will reset the touch foil driver when pressed.
7. Select the **SampleTime** you require which changes the scans per second as shown in the box called '**Rate**'. The faster the scan rate the more responsive the touch but the capacitive field generated is less and therefore goes through less material. **Sample Time** against **Rate** is shown in the table below:

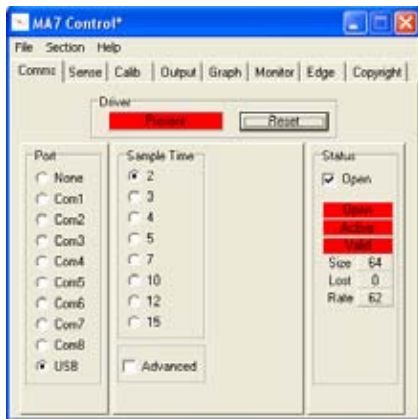


Fig 3

| Sample Time | Rate<br>(Scans per second) | Material thickness and response  |
|-------------|----------------------------|--|
| 2           | 61 - 62                    | Thin e.g. approx 4mm non-metallic material – sheet of glass for LCD Integration                          |
| 3           | 49 - 50                    |  |
| 4           | 46 - 47                    |  |
| 5           | 40 - 41                    | Medium e.g. approx 10- 12mm non-metallic material – standard window for through window touch             |
| 7           | 33 - 34                    |  |
| 10          | 27 - 28                    |  |
| 12          | 24 - 25                    |  |
| 15          | 20 - 21                    | Thick e.g. approx 20mm non-metallic material – double glazing* – total construction of glass and air gap |

\* In this mode we recommend only touch not the touch and drag function. Due to the variation in double construction glass Visual Planet recommend testing with a foil during the survey of each individual site since it is impossible to guarantee the foil will function in all cases.

Follow the above scan rates beginning with a lower sample time to determine the best response for your touch system. Different materials have different characteristics which will determine how the foil performs. Therefore we provide a flexible choice of sample times to ensure that your touch system is as responsive as possible.

Adjustment of the **Coarse Sensitivity**, **Press Threshold** and **Finger Pressure** in the '**Sense**' section of the driver may be needed after each Sample time adjustment. Experimentation is required for new users of this system to gain the knowledge required to make future installations very easy.

#### 4. Adjusting the Touch Sensitivity Level

To select the sensitivity setup click on the **Sense** tab:

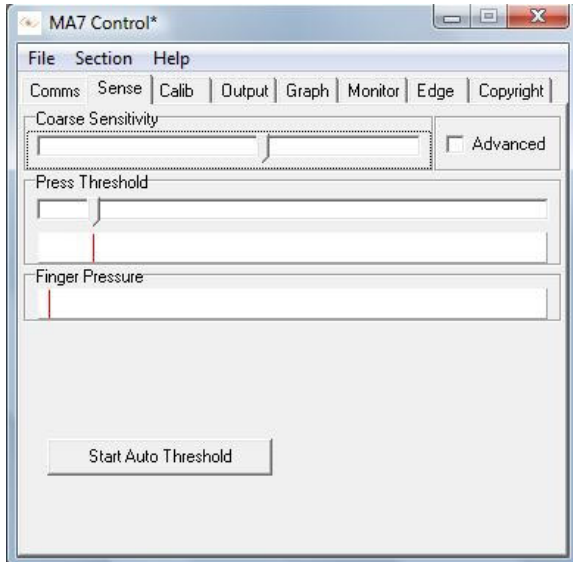


Fig 4

**The objective of the following setup is to use the minimum amount of coarse sensitivity required to achieve a satisfactory touch function, the thicker the substrate the more coarse sensitivity will be required.**

1. First set the **coarse sensitivity bar** to approximately 50% by dragging the bar with your mouse
2. Set the **Press Threshold bar** so the background movement of the **Finger Pressure** red line indicator movement does not go beyond press threshold red line indicator, by dragging the bar with your mouse (it will not move fully to the left hand side)
3. Touch the screen to see if the **Finger Pressure** red indicator goes above the **Press Threshold bar**. This action creates a touch (note: you will not see a cursor movement on the display until you enable the touch control see section 6)
4. If the **Finger Pressure** red indicator does not go above the **Press Threshold** level when you touch the screen then increase coarse sensitivity in small increments until the **Finger Pressure** red indicator goes above the **Press Threshold** indicator
5. Increasing the coarse sensitivity may increase the background movement of the finger pressure indicator above the press threshold level, if this is the case then increase the **Press Threshold bar** as described in point 2

**We recommend manual and not Auto Threshold**

## 5. Calibration

1. Select the **Calib** tab as shown below, click the '**Start Calibration**' box



Fig 5

2. You will see the following on the screen; three targets will appear in turn like the one shown below:

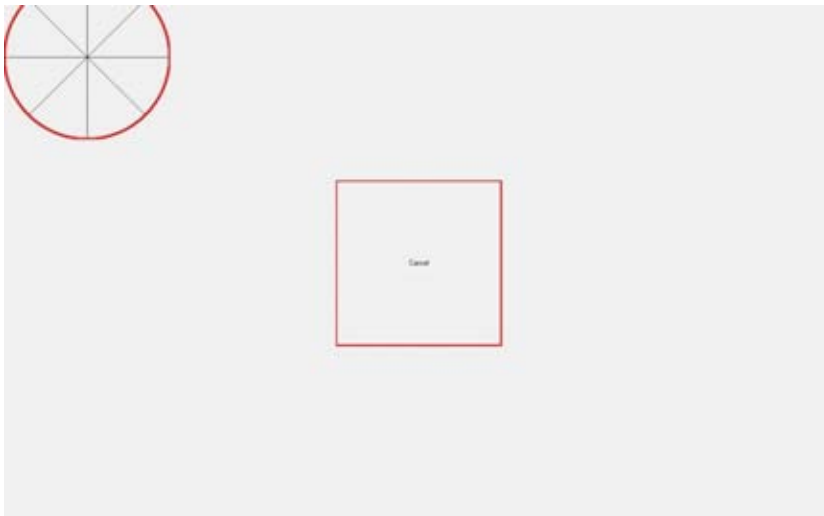


Fig 6

3. When each of these targets is displayed, **touch and hold** your finger on the centre of the target. **You must touch all three targets**
4. The red circle in the target slowly moves towards the centre of the target
5. Remove your finger only when the next target appears and touch that one

**If the touch calibration is not correct after this procedure, please run the process again and adjust your finger position on the targets to compensate for any misalignment.**

## 6. Setting the Touch Output to Suit the Application Program

Select the **output** tab:

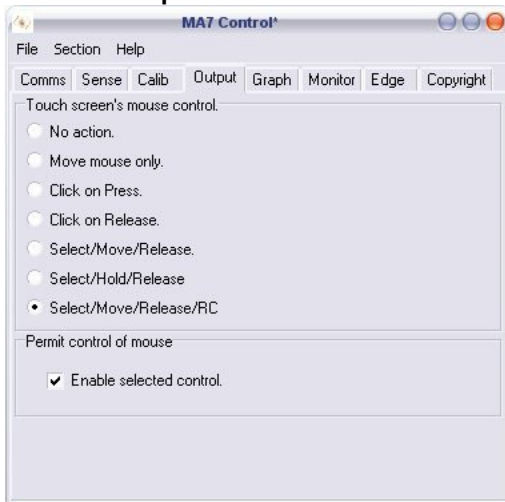


Fig 7

1. **To enable the touch function on the screen check the enable select control check box**
2. Select the required mouse control required for your application
3. If you are not achieving satisfactory touch and drag function please go back to section 4 adjusting the touch sensitivity function
4. Select/Move/Release/RC allows Right-Click menus to be selected by touching and holding the screen for several seconds

**For full details on the different mouse functions please go to the full user guide found in the ViP Documentation folder on the ViP Interactive Foil Installation CD.**

## 7. You Must Now Save the Configuration

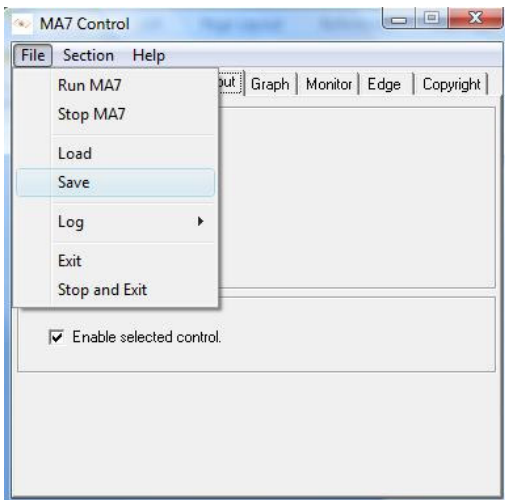


Fig 8

1. Click on file
2. Click on save to save the current settings
3. For details on the other file items please refer to the full user guide
4. **When the touch foil driver has been setup and there is no requirement to change it**

**Details on the other file menus please go to the full user guide found in the ViP Documentation folder on the ViP Interactive Foil Installation CD.**



## Installation Procedure - Cling film Version

### Components enclosed

ViP Interactive foil Cling film version

### Overview

The cling film is applied to the window followed by the interactive foil, which is attached to the back of the cling film.

It can take a few days for the water used in the installation process to fully evaporate, however this will not effect the attachment of the interactive foil. For large units (above 40") it is advisable to have two people available for the installation.

The electronic control board is either delivered fixed to the foil or is removable. The removable controller comprises of an orange ribbon cable laminated to the foil, with the electronic control board enclosed. See instructions below for installing both versions of the controller.

### Important

1. The Interactive foil must be handled carefully to avoid creasing or tearing.
2. Always lay the interactive foil on a soft scratch free surface where possible.
3. A soft lint free cloth should be used if the foil requires cleaning, clean from the centre of the foil out to the edges of the interactive foil.
4. **It can take 2-3 days for the water used in the installation process to fully evaporate. The water will show as misty areas over the whole screen surface these will clear; the misty areas will not affect the attachment of the interactive foil.**
5. **If you are applying an Holographic projection foil Sax3d HoPs Foil or a Pronova HoloPro foil onto the back of the touch foil then you must substitute the water for a light oil.**

### Cling film Installation

1. Mark on the outside window the correct position for the cling film/interactive.
2. The surface to which the cling film will be applied must be clean, dust-free and free of any oils or grease. Dirt and other contaminants allow pockets of air that undermine the seal necessary for a good installation. Use of a good glass cleaner is recommended prior to installation.
3. Apply a *light* mist of water using a water sprayer/atomiser to the area to which the cling film will be applied will aid in positioning the cling film and in smoothing out any air bubbles that occur during installation.
4. Slowly and gently remove the cling film from the backing or liner. Take care not to stretch or crease the cling film. Fig 1



Fig 1

5. Place the top edge of the cling film in position and then slowly allow the whole cling film to gently wet onto the glass Fig 2.



Fig 2

6. Apply a light mist of water onto the back surface of the cling film. It may help to have a very small amount of soap in the water to allow the squeegee to run smoothly over the cling film when you are removing the excess water from under the film.
7. If large bubbles are trapped it may be necessary to lift the cling film off the surface and re-smooth it from that point rather than trying to force the bubble to the edge, which may stretch or crease the cling film.
8. Squeegee the excess water out from under the cling film from the centre to the edges of the cling film. Fig 3.



Fig 3

9. Slowly increase the squeegee pressure once you have removed the majority of the water from under the cling film.
10. Remember not to let the top surface of the cling to dry as you laminate.
11. Leave the cling film to dry for about 30mins before you apply the interactive foil.

## Interactive Foil Installation

The Interactive foil can be mounted in any orientation however the electronics will require secure fixing to avoid the foil from peeling away from the cling film. The following installation instructions assume the electronics will be mounted at the bottom edge.

1. Carefully remove the Interactive foil from the packing, keeping the packing roll if you intend to reuse the foil at a later point.
2. Un-roll the foil and lay on a flat non abrasive surface, if cleaning is required use a damp lint free cloth; always clean from the centre of the foil out to the edges of the interactive foil.
3. Apply a *light* mist of water (with a very small amount of soap) using a sprayer/atomiser to the back of the cling film.
4. Carefully align the top edge of the interactive foil 2-3mm below the top edge of the cling film, and then **slowly** allow the foil to wet on to roll cling film Fig 4/5



Fig4



Fig5

5. Using the squeegee work from the centre to the edges of the foil carefully smooth out any air bubbles that occur during installation Fig 6.



Fig 6

6. If the foil requires re-positioning carefully lift a corner of the interactive foil then gently remove the foil and repeat the installation process.
7. **If during the installation water enters the electronics of the interactive foil please allow sufficient time to dry before using the Interactive foil.**
8. The electronics should be secured using suitable double-sided tape.
9. If applying to a piece of glass or acrylic substrate allow at least 24 hours before moving, to allow sufficient evaporation of the remaining water to enable a good bond to the substrate.

## Removable Electronics

10. When using the **Removable electronics**, once the touch foil lamination process has finished and the touch foil is sufficiently dry the electronics can now be added. Please note, if the board is attached too soon after the lamination process the extra weight of the board may cause the touch foil to move position.
11. You must ensure the foil is unplugged from the computer before removing/disconnecting the controller board from the orange ribbon cable
12. **Carefully** lift the clamping clip as shown below taking care not to over extend the clamping clip.

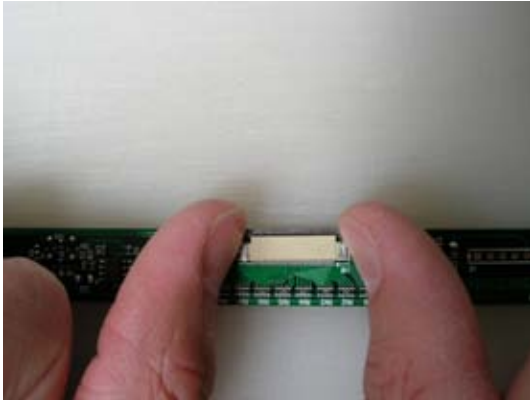


Fig 7



Fig 8

13. Prepare the position of the electronics in relation to lining with the position of the orange ribbon cables. The board's components and the gold bar of the orange ribbon cable should be facing up.

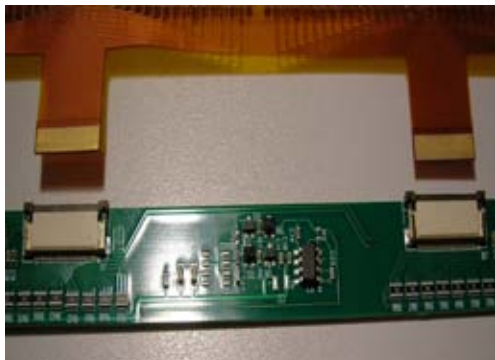


Fig 9

14. Gently insert the connectors into position. The ribbon cable must be fully inserted until no gold bar can be seen. Once in, push the two brown bars in until it becomes locked.



Fig 10

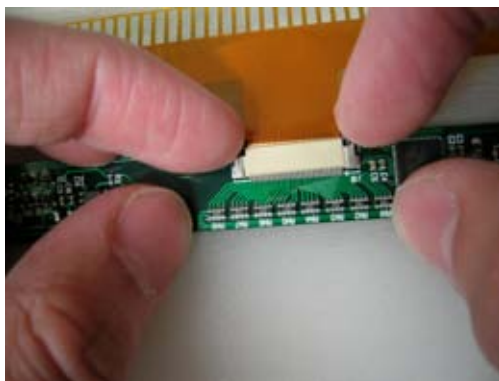


Fig 11

15. Once connected to the foil fold the flat side of the board back up on itself towards the tail. Take the black board cover, open the gap gently to allow smooth sliding and slide the ribbon and board inside. Do this slowly and carefully without damaging the ribbon cable or the parts of the electronic control board.



Fig 12



Fig 13

16. With the board and ribbon cable safely covered all electronic components will be suitably protected



Fig 14

## Detachable Earth Wire

For our USB and Removable USB Controller Boards you will find attached a female bullet connector along with a male bullet connector enclosed with delivery of your foil. This is for use with LCD Integration and installations where grounding to nearby metalwork would be recommended.



Fig 15

17. Align the male and female bullet connectors



Fig 16

18. Firmly connect the male bullet connector with the female bullet connector (attached to the control board) ensuring they are fully pushed together to achieve connection



Fig 17

19. Connect the fork end of the Earth wire to the metal Chassis of the LCD or nearby metal framework. The whole system should be earthed t the same potential

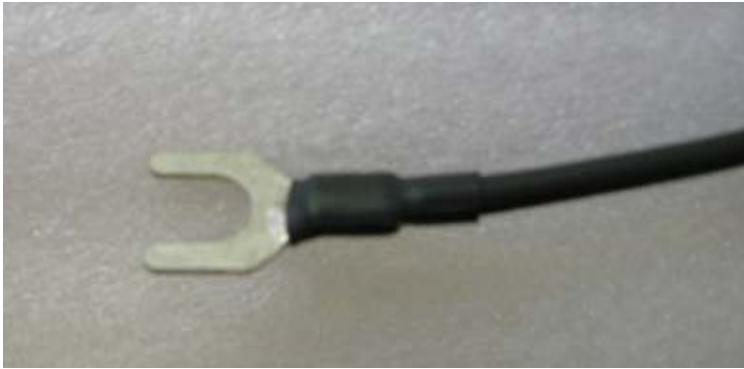


Fig 18

For additional information see video of the foil application supplied on the ViP Interactive Foil Installation CD or visit [www.vipsupport.blogspot.com](http://www.vipsupport.blogspot.com)

**Disclaimer:** It is the duty of the User to determine the suitability of the ViP Interactive Foil based on the Users' intended purpose. It is in this "Quick Start Guide and Lamination Instruction Manual" that we only provide convenient recommendations and descriptions based on technical information and installation statements and therefore the accuracy of this information is not warranted. The ViP Interactive Foil is not intended to be used for medical devices. The ViP Interactive Foil is warranted to meet its published specifications set from date of shipment and it is at Visual Planet's discretion whether to repair, replace or refund in the event of these specifications not being adhered to. The specifications of the ViP Interactive Foil are subject to change without prior warning. Visual Planet will not be responsible for any product related action resulting in loss or damages caused by misuse or modifications and subsequent manufacturing operations carried out by anyone other than a Visual Planet employee. This "Quick Start Guide and Lamination Instruction Manual" is subject to change without prior warning. Visual Planet shall not in any event be liable for economic loss of profits, indirect, special, bodily injuries or consequential damages.

### **Visual Planet Touch Foil Warranty Policy**

Visual Planet Touch foils are warranted to be free from defects and other faults for a period of 1 year from the date of shipment.

Visual Planet will at their discretion either repair or replace a faulty touch foil if a fault is found during the warranty period.

Faults or damage caused by the user due to negligence, lack of training or caused maliciously in any installation environment is specifically excluded from the warranty.

#### Repair charges outside warranty

|                  |   |     |
|------------------|---|-----|
| 1. Controller    | £50   |     |
| 2. RS232 Cable   | Up to 6 m   | £15 |
|                  | 15 metre  | £25 |
| 3. Foil repair   | where a foil is damaged, or controller is detached due to user error<br>£50 for replacement controller<br>£50 labour charge |     |
| 4. Complete Foil | replacement foils outside warranty are priced at Visual Planet published list prices operating at the time                  |     |

#### Returns procedure

Where a foil is returned for evaluation and repair Visual Planet will prepare a report on the faults found with the foil and clarify if it is deemed to be reparable or not.

Any shipping charges during the warranty are the responsibility of the reseller.