

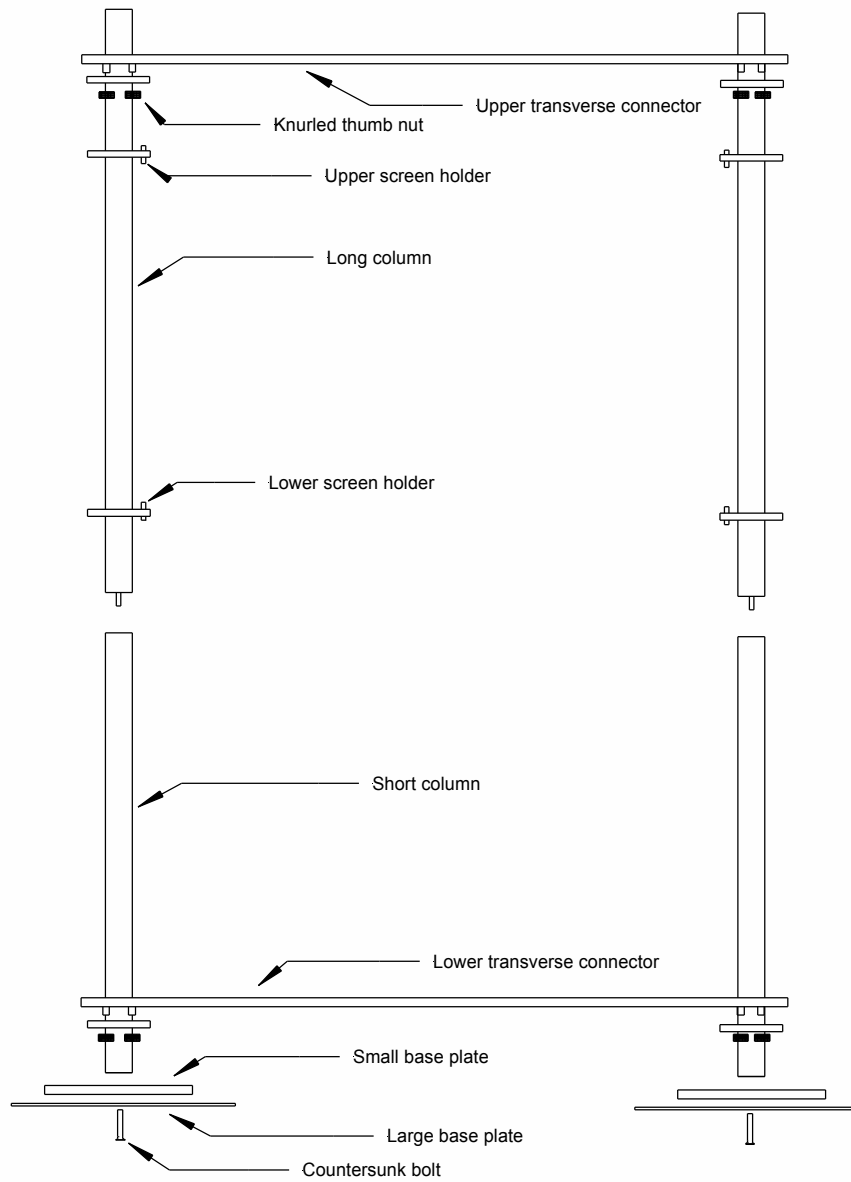
Assembly Instruction for Fristem Design Stand



The "Fristem" designer stand consists of 4 column components, 2 transverse connection rods, 4 base plates, 2 countersunk bolts and an assembly wrench kit.

1. The short column components are screwed onto the base plates, with the ring facing downwards, using the countersunk bolts. In doing so it should be ensured that the edge of the small plate is facing the ground. To increase the stability the large plate can also be secured with the central bolt (for the 67" HoloPro™ this is a must). The countersunk side of the plate must face towards the ground.
2. The columns are now set up and screwed to the long column components.
3. The two complete columns are set in position and the transverse connection rods are inserted with all gudgeons in the top and bottom ring. To do so the knurled thumb nuts of the rods have to be removed. It must be ensured that the screen holders of two columns are parallel to each other. The lower connector must be secured with the knurled thumb nuts.
4. The upper transverse connection is removed again and a column is slightly tilted. Then the screen is inserted into the screen holder of the column which is not tilted by a second person (in the case of a 67" HoloPro™ by two additional persons) In doing so the screen should not be bent or put down roughly. Now the tilted column is positioned vertically once again and at the same time the HoloPro™ screen is placed in the holder of this column. The upper transverse connector is used again and fastened with the knurled thumb nuts. You can then let go of the screen.

Assembly Drawing for "Fristem" Designer Stand



Safety Instructions

When installing HoloPro™ the following has to be taken into account:

1. The installation is only allowed to be carried out by pronova or trained personnel of the authorised dealers.
2. The installation of HoloPro™ screens should be carried out by two persons.
3. HoloPro™ should only be transported in the original flight case, in order to avoid damage.
4. HoloPro™ corners are ground. They can splinter if they are put down too heavily or are subjected to - too much burden at particular points. This can cause cut injuries.
5. HoloPro™ screens should only be handled with sweat-proof gloves. If this is not possible, the fingerprints which occur must be removed immediately, in order to avoid damage to the anti-reflection layer.
6. Abrasive substances or blades are not allowed to be used for cleaning the screen.
7. When mounting on the ceiling the projector must be doubly secured (chains, catch hooks).
8. The inlet and outlet ventilation slits of the projector are not allowed to be covered up (see operating instructions of the projector).

Improper use of the accessories can lead to injuries or cause HoloPro™ to fall down. In the case of incorrect usage or failure to observe the safety instructions and assembly instructions, pronova shall recognise no liability whatsoever on its part.

